

VariA 40-9 250 2 0.75
VariA 40-14 250 2 1.1
VariA 40-17 250 2 1.5

Nominal diameter	DN 40
Overall length	250 mm
Flanged connection	PN 16
Max. operating pressure	10 bar
Ambient temperature	0°C ... +40°C
Medium temperatures RED	+15°C ... +140°C
Medium temperatures GREEN 2	-20°C ... +90°C
Glycol proportion RED	≤25%
Glycol proportion GREEN 2	≤50%

Electrical data
VariA 40-9 250 2 0.75

Absorbed power P_2	0.75 kW
Nominale stroom	1.70 A

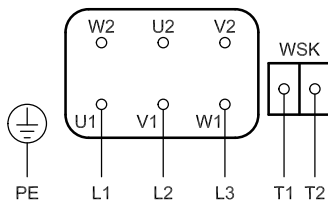
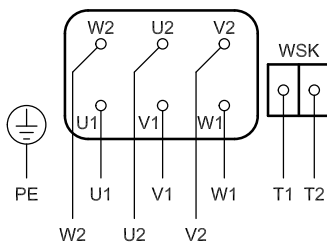
VariA 40-14 250 2 1.1

Absorbed power P_2	1.10 kW
Nominale stroom	2.20 A

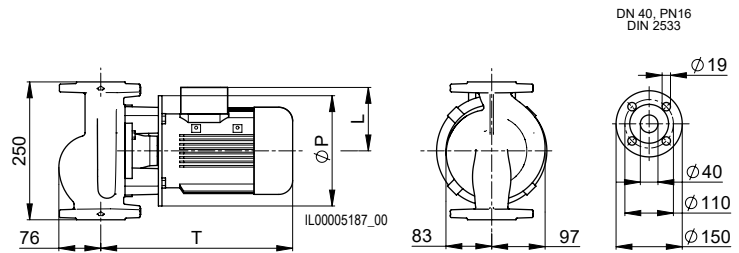
VariA 40-17 250 2 1.5

Absorbed power P_2	1.50 kW
Nominale stroom	3.10 A

Efficiency class	IE3
Protection type	IP55
Insulation class	F
Voltage / frequency	3x400V / 50 Hz
Motor protection	CTP 150°C
Speed	2900 1/min

Connction diagram
Direct start-up

Y/Δ-start-up

VariA... RED PN 16 without support
Art. No.

VariA 40-9 250 2 0.75	2210130150
VariA 40-14 250 2 1.1	2210140150
VariA 40-17 250 2 1.5	2210150150



Type	T	P	L	Weight	Motor
VariA 40-9 250 2 0.75	348	200	115	22.5 kg	80M
VariA 40-14 250 2 1.1	348	200	115	23.5 kg	80M
VariA 40-17 250 2 1.5	351	200	132	27.5 kg	90S

